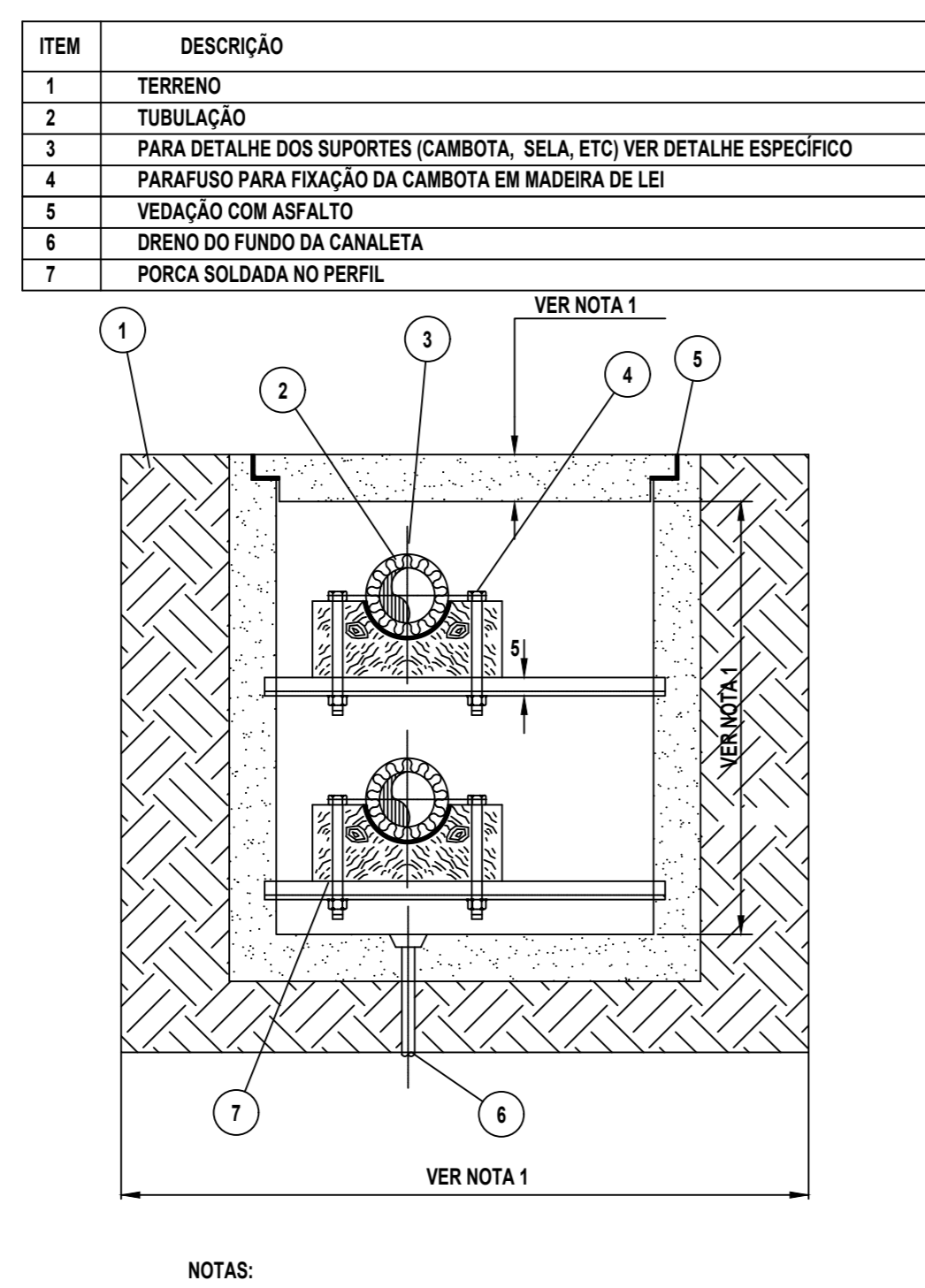
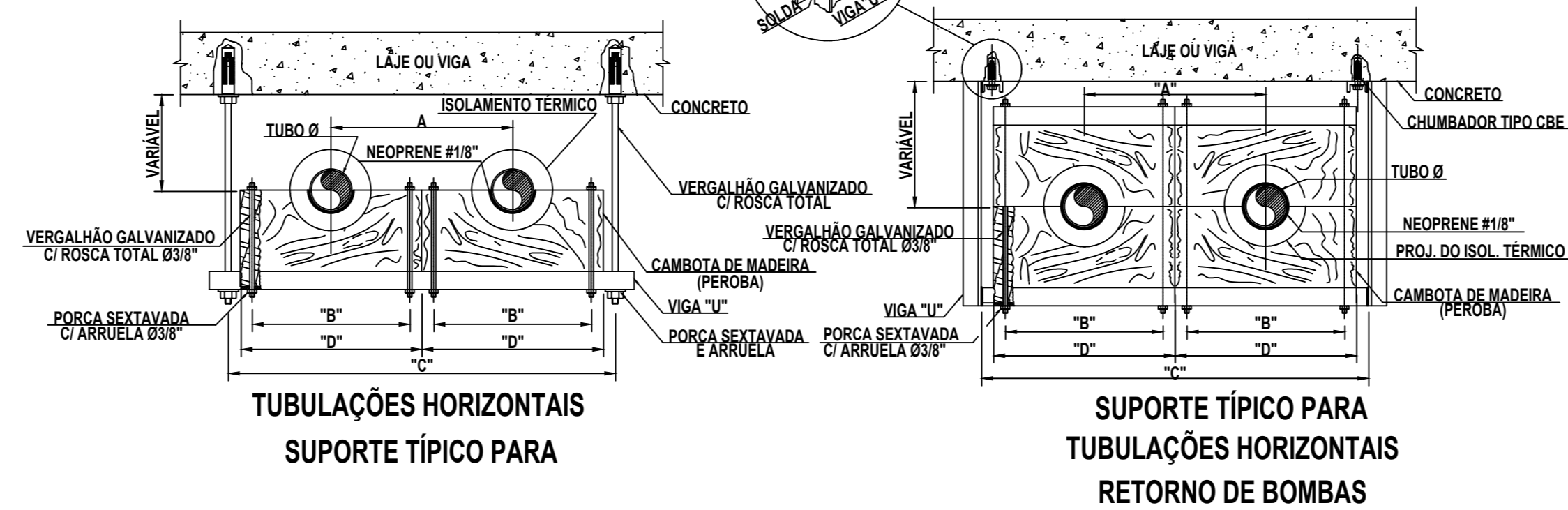


DETALHE CONEXÕES TÍPICAS - FAN-COIL (HIDRÁULICA ISOLADA E RECHAPEADA ATÉ O RAMAL)

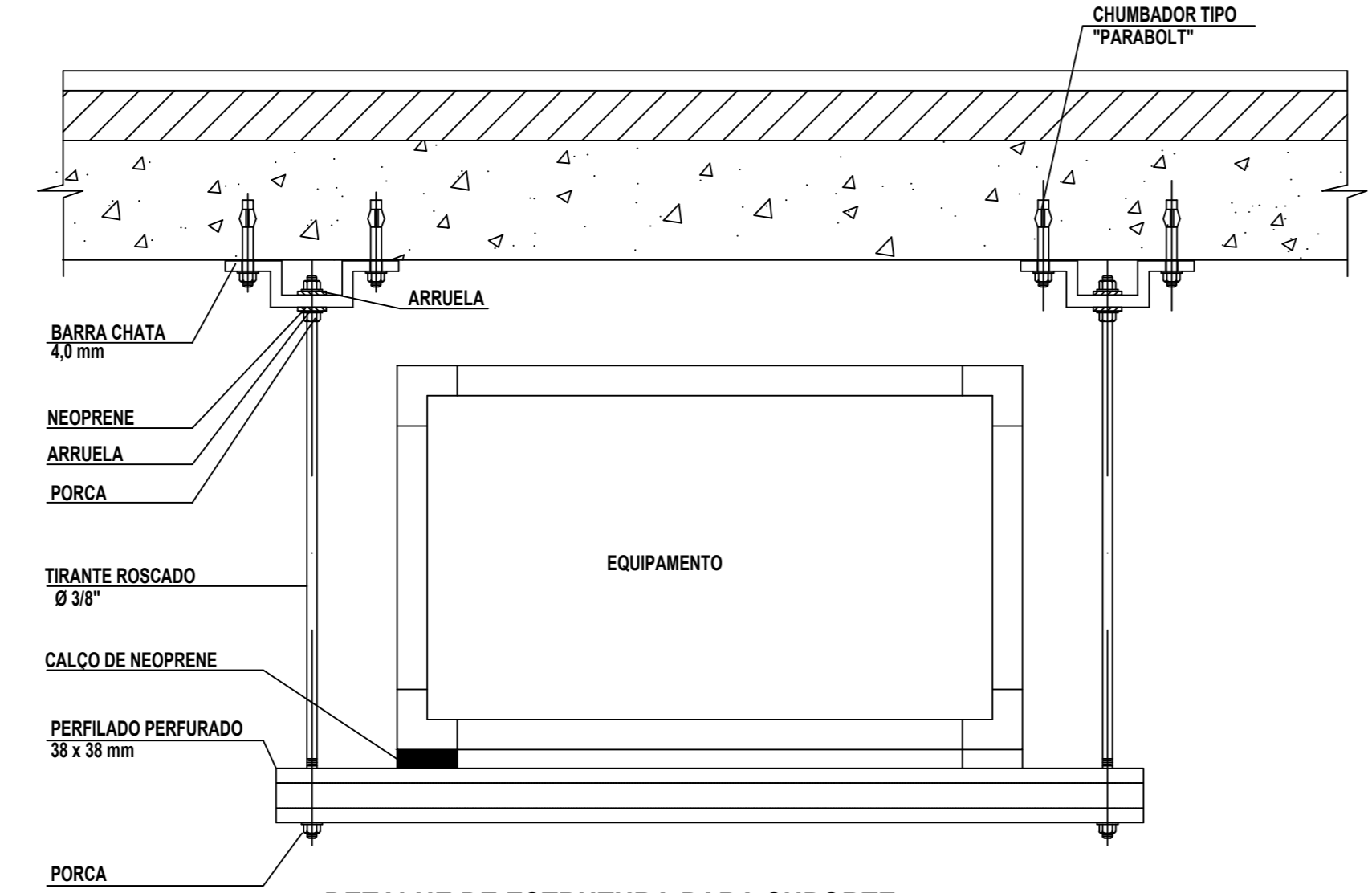
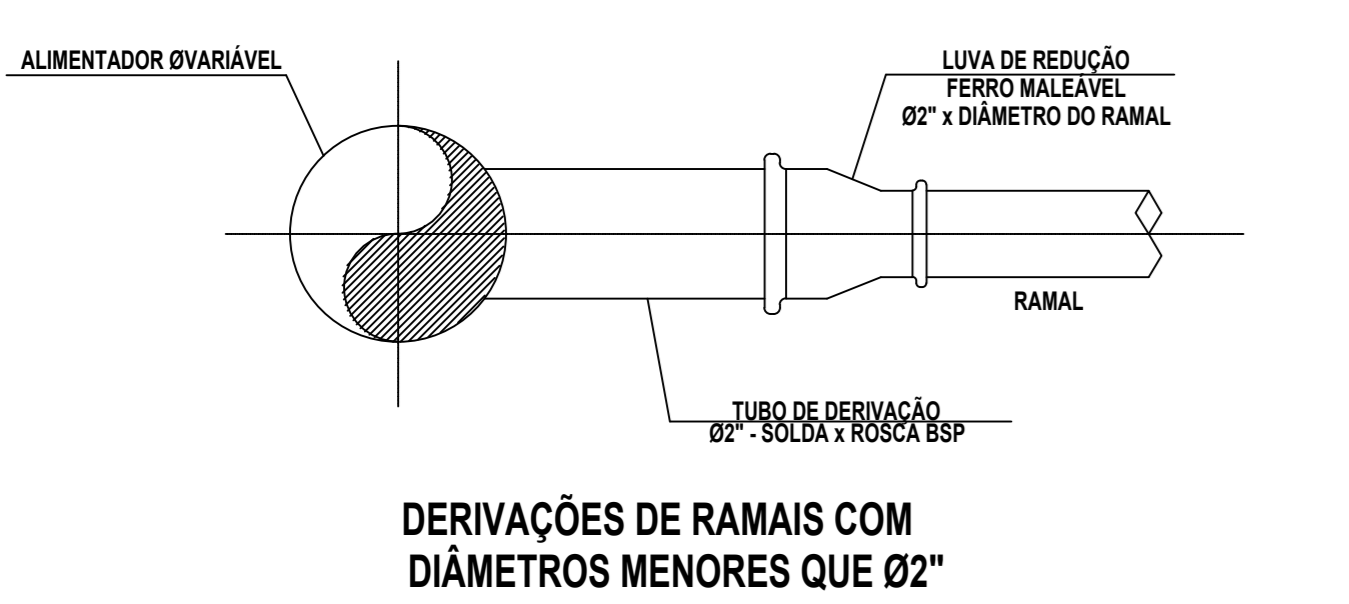


DETALHE PARA CANALETA ENTERRADA

| DIÂMETRO DA TUBULAÇÃO | MEDIDAS (mm) | | | | | | | ESPAÇAMENTO ENTRE SUPORTES | DIÂMETRO DOS VERGALHOS | CHUMBADOR TIPO CBE | COMPR. DO PARAFUSO | CHUMBADOR TIPO CBE | CARGA ÚNICA | VIGA "U" |
|-----------------------|--------------|------|------|------|------|------|------|----------------------------|------------------------|--------------------|--------------------|--------------------|-------------|-------------|
| | A | B | C | D | E | F | R | | | | | | | |
| 1/2" | 101 | 114 | 127 | 140 | 153 | 166 | 179 | 200 | 14 | M30 | 100 | M30 | 200 | U12x12xALUM |
| 3/4" | 114 | 127 | 140 | 153 | 166 | 179 | 192 | 210 | 16 | M36 | 100 | M36 | 200 | U12x12xALUM |
| 1" | 127 | 140 | 153 | 166 | 179 | 192 | 205 | 225 | 18 | M42 | 100 | M42 | 200 | U12x12xALUM |
| 1 1/4" | 153 | 166 | 179 | 192 | 205 | 218 | 231 | 255 | 22 | M48 | 100 | M48 | 200 | U12x12xALUM |
| 1 1/2" | 166 | 179 | 192 | 205 | 218 | 231 | 244 | 270 | 24 | M54 | 100 | M54 | 200 | U12x12xALUM |
| 2" | 192 | 205 | 218 | 231 | 244 | 257 | 270 | 300 | 28 | M60 | 100 | M60 | 200 | U12x12xALUM |
| 2 1/2" | 218 | 231 | 244 | 257 | 270 | 283 | 296 | 330 | 32 | M66 | 100 | M66 | 200 | U12x12xALUM |
| 3" | 244 | 257 | 270 | 283 | 296 | 309 | 322 | 360 | 36 | M72 | 100 | M72 | 200 | U12x12xALUM |
| 3 1/2" | 270 | 283 | 296 | 309 | 322 | 335 | 348 | 390 | 40 | M78 | 100 | M78 | 200 | U12x12xALUM |
| 4" | 296 | 309 | 322 | 335 | 348 | 361 | 374 | 420 | 44 | M84 | 100 | M84 | 200 | U12x12xALUM |
| 4 1/2" | 322 | 335 | 348 | 361 | 374 | 387 | 400 | 450 | 48 | M90 | 100 | M90 | 200 | U12x12xALUM |
| 5" | 348 | 361 | 374 | 387 | 400 | 413 | 426 | 480 | 52 | M96 | 100 | M96 | 200 | U12x12xALUM |
| 5 1/2" | 374 | 387 | 400 | 413 | 426 | 439 | 452 | 510 | 56 | M102 | 100 | M102 | 200 | U12x12xALUM |
| 6" | 400 | 413 | 426 | 439 | 452 | 465 | 478 | 540 | 60 | M108 | 100 | M108 | 200 | U12x12xALUM |
| 6 1/2" | 426 | 439 | 452 | 465 | 478 | 491 | 504 | 570 | 64 | M114 | 100 | M114 | 200 | U12x12xALUM |
| 7" | 452 | 465 | 478 | 491 | 504 | 517 | 530 | 600 | 68 | M120 | 100 | M120 | 200 | U12x12xALUM |
| 7 1/2" | 478 | 491 | 504 | 517 | 530 | 543 | 556 | 630 | 72 | M126 | 100 | M126 | 200 | U12x12xALUM |
| 8" | 504 | 517 | 530 | 543 | 556 | 569 | 582 | 660 | 76 | M132 | 100 | M132 | 200 | U12x12xALUM |
| 8 1/2" | 530 | 543 | 556 | 569 | 582 | 595 | 608 | 690 | 80 | M138 | 100 | M138 | 200 | U12x12xALUM |
| 9" | 556 | 569 | 582 | 595 | 608 | 621 | 634 | 720 | 84 | M144 | 100 | M144 | 200 | U12x12xALUM |
| 9 1/2" | 582 | 595 | 608 | 621 | 634 | 647 | 660 | 750 | 88 | M150 | 100 | M150 | 200 | U12x12xALUM |
| 10" | 608 | 621 | 634 | 647 | 660 | 673 | 686 | 780 | 92 | M156 | 100 | M156 | 200 | U12x12xALUM |
| 10 1/2" | 634 | 647 | 660 | 673 | 686 | 699 | 712 | 810 | 96 | M162 | 100 | M162 | 200 | U12x12xALUM |
| 11" | 660 | 673 | 686 | 699 | 712 | 725 | 738 | 840 | 100 | M168 | 100 | M168 | 200 | U12x12xALUM |
| 11 1/2" | 686 | 699 | 712 | 725 | 738 | 751 | 764 | 870 | 104 | M174 | 100 | M174 | 200 | U12x12xALUM |
| 12" | 712 | 725 | 738 | 751 | 764 | 777 | 790 | 900 | 108 | M180 | 100 | M180 | 200 | U12x12xALUM |
| 12 1/2" | 738 | 751 | 764 | 777 | 790 | 803 | 816 | 930 | 112 | M186 | 100 | M186 | 200 | U12x12xALUM |
| 13" | 764 | 777 | 790 | 803 | 816 | 829 | 842 | 960 | 116 | M192 | 100 | M192 | 200 | U12x12xALUM |
| 13 1/2" | 790 | 803 | 816 | 829 | 842 | 855 | 868 | 990 | 120 | M198 | 100 | M198 | 200 | U12x12xALUM |
| 14" | 816 | 829 | 842 | 855 | 868 | 881 | 894 | 1020 | 124 | M204 | 100 | M204 | 200 | U12x12xALUM |
| 14 1/2" | 842 | 855 | 868 | 881 | 894 | 907 | 920 | 1050 | 128 | M210 | 100 | M210 | 200 | U12x12xALUM |
| 15" | 868 | 881 | 894 | 907 | 920 | 933 | 946 | 1080 | 132 | M216 | 100 | M216 | 200 | U12x12xALUM |
| 15 1/2" | 894 | 907 | 920 | 933 | 946 | 959 | 972 | 1110 | 136 | M222 | 100 | M222 | 200 | U12x12xALUM |
| 16" | 920 | 933 | 946 | 959 | 972 | 985 | 998 | 1140 | 140 | M228 | 100 | M228 | 200 | U12x12xALUM |
| 16 1/2" | 946 | 959 | 972 | 985 | 998 | 1011 | 1024 | 1170 | 144 | M234 | 100 | M234 | 200 | U12x12xALUM |
| 17" | 972 | 985 | 998 | 1011 | 1024 | 1037 | 1050 | 1200 | 148 | M240 | 100 | M240 | 200 | U12x12xALUM |
| 17 1/2" | 998 | 1011 | 1024 | 1037 | 1050 | 1063 | 1076 | 1230 | 152 | M246 | 100 | M246 | 200 | U12x12xALUM |
| 18" | 1024 | 1037 | 1050 | 1063 | 1076 | 1089 | 1102 | 1260 | 156 | M252 | 100 | M252 | 200 | U12x12xALUM |
| 18 1/2" | 1050 | 1063 | 1076 | 1089 | 1102 | 1115 | 1128 | 1290 | 160 | M258 | 100 | M258 | 200 | U12x12xALUM |
| 19" | 1076 | 1089 | 1102 | 1115 | 1128 | 1141 | 1154 | 1320 | 164 | M264 | 100 | M264 | 200 | U12x12xALUM |
| 19 1/2" | 1102 | 1115 | 1128 | 1141 | 1154 | 1167 | 1180 | 1350 | 168 | M270 | 100 | M270 | 200 | U12x12xALUM |
| 20" | 1128 | 1141 | 1154 | 1167 | 1180 | 1193 | 1206 | 1380 | 172 | M276 | 100 | M276 | 200 | U12x12xALUM |



SUPORTE PARA TUBOS ISOLADOS



| Ø DO TUBO (NOMINAL) | TUBO DE ÁGUA QUENTE R (mm) | TUBO DE ÁGUA GELADA R (mm) | A (mm) | B (mm) | C (mm) |
|---------------------|----------------------------|----------------------------|--------|--------|--------|
| 1/2" | 13,80 | 37,0 | 167,0 | 117,0 | 100,0 |
| 3/4" | 16,80 | 40,0 | 172,0 | 122,0 | 100,0 |
| 1" | 19,80 | 43,0 | 178,0 | 128,0 | 100,0 |
| 1 1/4" | 24,30 | 48,0 | 186,0 | 136,0 | 100,0 |
| 1 1/2" | 27,30 | 51,0 | 228,0 | 178,0 | 120,0 |
| 2" | 33,40 | 57,0 | 228,0 | 178,0 | 120,0 |
| 2 1/2" | 41,30 | 65,0 | 254,0 | 204,0 | 120,0 |
| 3" | 47,70 | 71,0 | 254,0 | 204,0 | 120,0 |
| 4" | 60,40 | 84,0 | 280,0 | 230,0 | 150,0 |
| 5" | 73,90 | 97,0 | 330,0 | 280,0 | 160,0 |
| 6" | 87,40 | 111,0 | 380,0 | 330,0 | 170,0 |
| 8" | 112,70 | 135,0 | 430,0 | 380,0 | 200,0 |
| 10" | 140,00 | 163,0 | 480,0 | 430,0 | 230,0 |
| 12" | 165,10 | 189,0 | 534,0 | 484,0 | 250,0 |
| 14" | 191,00 | 204,0 | 584,0 | 534,0 | 300,0 |
| 16" | 206,30 | - | 634,0 | 584,0 | 350,0 |
| 18" | 211,50 | - | 684,0 | 634,0 | 350,0 |
| 20" | 237,20 | - | 764,0 | 714,0 | 400,0 |

DETALHE DIMENSIONAL DAS CAMBOTAS DE MADEIRA TUBULAÇÕES DE ÁGUA GELADA

AMBOS OS TUBOS "S" ISOLAMENTO
TUBO INFERIOR ISOLADO
AMBOS OS TUBOS "S" ISOLAMENTO
TUBO SUPERIOR ISOLADO

| DIÂMETRO NOMINAL | DISTÂNCIA "A" (mm) | | | | | | | | | | | | | | | |
|------------------|--------------------|--------|-----|--------|-----|-----|-----|-----|-----|-----|-----|-----|-----|-----|-----|--|
| | 1" | 1.1/2" | 2" | 2.1/2" | 3" | 4" | 6" | 8" | 10" | 12" | 14" | 16" | 18" | 20" | 24" | |
| 1" | 82 | | | | | | | | | | | | | | | |
| 1.1/2" | 93 | 103 | | | | | | | | | | | | | | |
| 2" | 101 | 112 | 120 | | | | | | | | | | | | | |
| 2.1/2" | 110 | 112 | 129 | 138 | | | | | | | | | | | | |
| 3" | 122 | 132 | 141 | 150 | 161 | | | | | | | | | | | |
| 4" | 139 | 150 | 158 | 167 | 179 | 196 | | | | | | | | | | |
| 6" | 177 | 188 | 196 | 206 | 217 | 235 | 273 | | | | | | | | | |
| 8" | 213 | 224 | 232 | 242 | 253 | 271 | 309 | 345 | | | | | | | | |
| 10" | 252 | 262 | 271 | 280 | 291 | 309 | 347 | 383 | 421 | | | | | | | |
| 12" | 288 | 298 | 307 | 316 | 327 | 345 | 383 | 419 | 457 | 493 | | | | | | |
| 14" | 311 | 321 | 329 | 338 | 350 | 368 | 406 | 442 | 480 | 516 | 559 | | | | | |
| 16" | 336 | 346 | 355 | 374 | 385 | 403 | 441 | 477 | 515 | 551 | 574 | 609 | | | | |
| 18" | 362 | 382 | 401 | 410 | 421 | 430 | 471 | 513 | 551 | 587 | 610 | 645 | 681 | | | |
| 20" | 418 | 438 | 437 | 446 | 457 | 475 | 513 | 549 | 587 | 623 | 646 | 681 | 717 | 754 | | |
| 24" | 490 | 500 | 509 | 518 | 529 | 547 | 585 | 621 | 660 | 696 | 718 | 754 | 790 | 826 | 898 | |

NOTAS:
1- AS DISTÂNCIAS "B" FORMAM CALCULADAS PARA UMA FOLGA DE DREN ENTRE OS TUBOS. CASO SEJA NECESSÁRIO UMA FOLGA MAIOR, AS DISTÂNCIAS DEVEM SER AUMENTADAS.
2- DISTÂNCIAS CALCULADAS CONSIDERANDO-SE TUBOS COM FLANGES DEFIKADAS OU SEM FLANGES.

ESPAÇAMENTO ENTRE EIXOS DOS TUBOS PARA CRUZAMENTO A 45°

